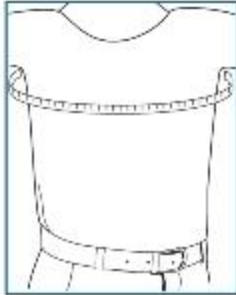




Sizing Charts



HIGH VISIBILITY VEST

DIRECTIONS: MEASURE THE CIRCUMFERENCE ROUND THE CENTER OF YOUR CHEST.
NOTE: ADD A FEW INCHES TO YOUR CHEST MEASUREMENT, THE EXTRA INCHES WILL ALLOW ROOM FOR A VARIETY OF SEASONAL CLOTHING TO BE WORN UNDERNEATH.

M	L	XL	2XL	3XL	4XL	5XL
42-44	44-46	48-50	52-54	56-58	60-62	62-64



GLOVE SIZING

DIRECTIONS: MEASURE THE CIRCUMFERENCE OF YOUR HAND AROUND KNUCKLE AND PALM, EXCLUDING THE THUMB. THE MEASUREMENT IN INCHES IS THE NUMERIC SIZE.

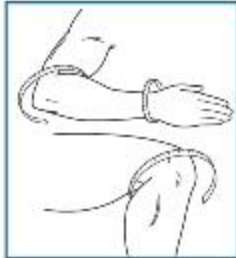
SIZE	XXS	XS	S	M	L	XL	2XL	3XL
Hand in Inches	5" - 6"	6" - 7"	7" - 8"	8" - 9"	9" - 10"	10" - 11"	11" - 12"	12" - 13"



BACK SUPPORTS

DIRECTIONS: MEASURE THE CIRCUMFERENCE OF YOUR WAIST.

MODELS	S	M	L	XL	2XL	3XL
VCL4/VCL6	28" - 29"	31" - 36"	34" - 39"	38" - 44"	43" - 48"	-
VLP4/VLP6	22" - 29"	30" - 36"	37" - 43"	44" - 51"	52" - 59"	-
VRL4/VRL6	24" - 30"	31" - 37"	38" - 44"	45" - 51"	-	-
VEE7	24" - 34"	32" - 42"	42" - 52"	-	-	-
VES8	24" - 30"	32" - 42"	42" - 56"	44" - 51"	-	-
VEH9	27" - 32"	32" - 37"	35" - 40"	40" - 45"	45" - 52"	52" - 58"



WRIST, ELBOW, KNEE & ANKLE SUPPORTS

DIRECTIONS: MEASURE THE CIRCUMFERENCE OF YOUR ELBOW, WRIST OR KNEE.

MODELS	S	M	L	XL
WHD-1	5 1/8" - 6 1/8"	6 1/8" - 6 7/8"	6 7/8" - 7 3/8"	7 3/8" - 8 3/8"
WHD-2	-	-	6 7/8" - 7 3/8"	7 3/8" - 8 3/8"
KSC, KSO	13" - 15"	15" - 18"		
NAS	Shoe Size 6 - 10		Shoe Size 10 - 14	
ESS, EST	8 1/2" - 11"	11" - 13"		
WSS, EWS, EWW, EWW-T	ONE SIZE FITS ALL			